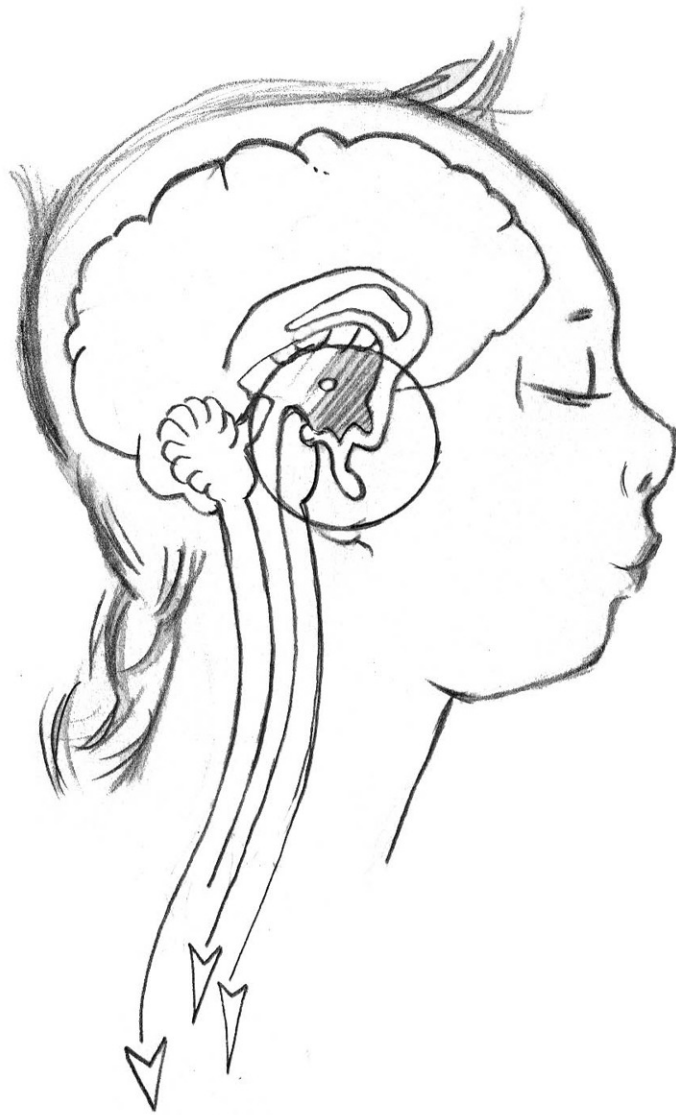


# **Whole page diagrams**

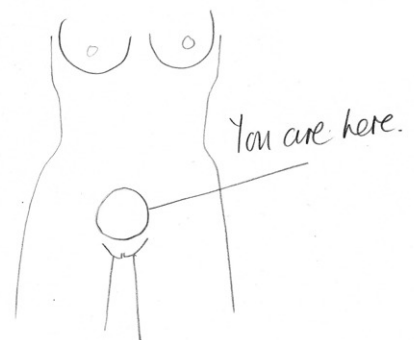
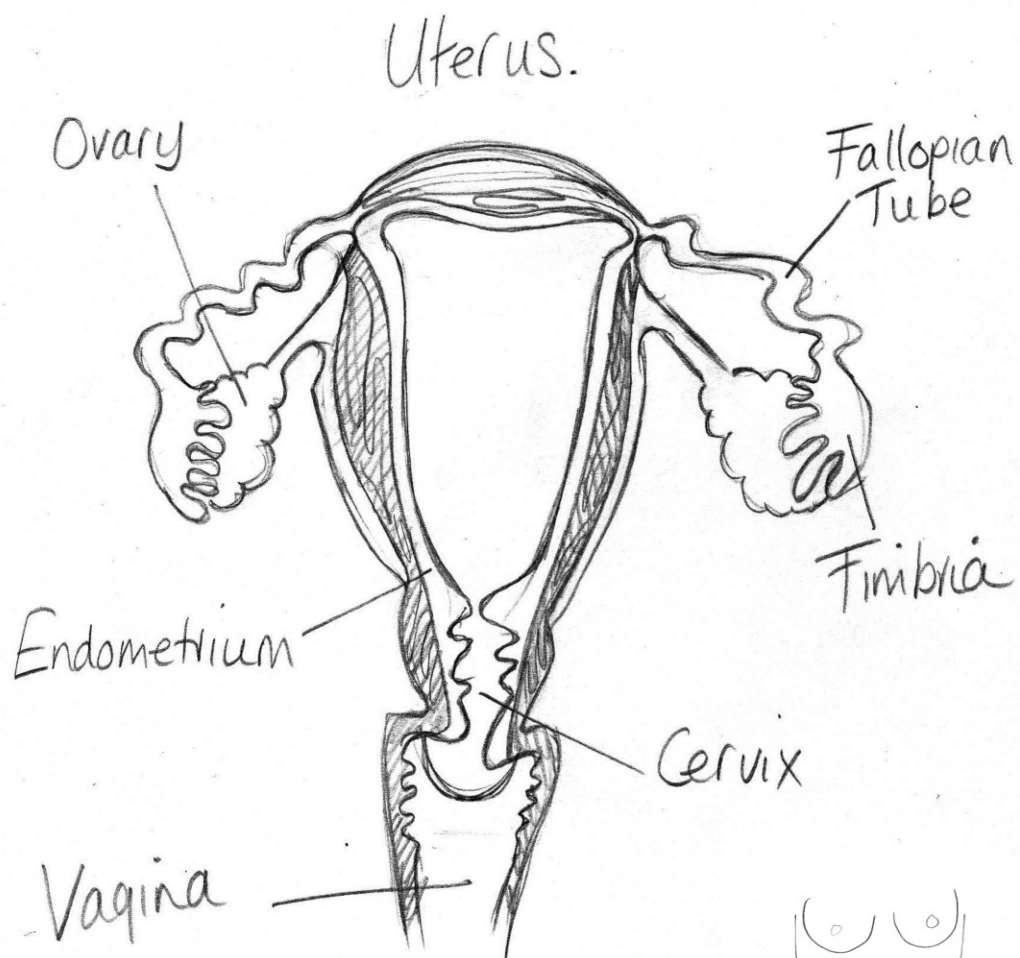
**Illustrated by Jessie Gillick**





**The pituitary gland in the brain controls the reproductive organs in men and women**

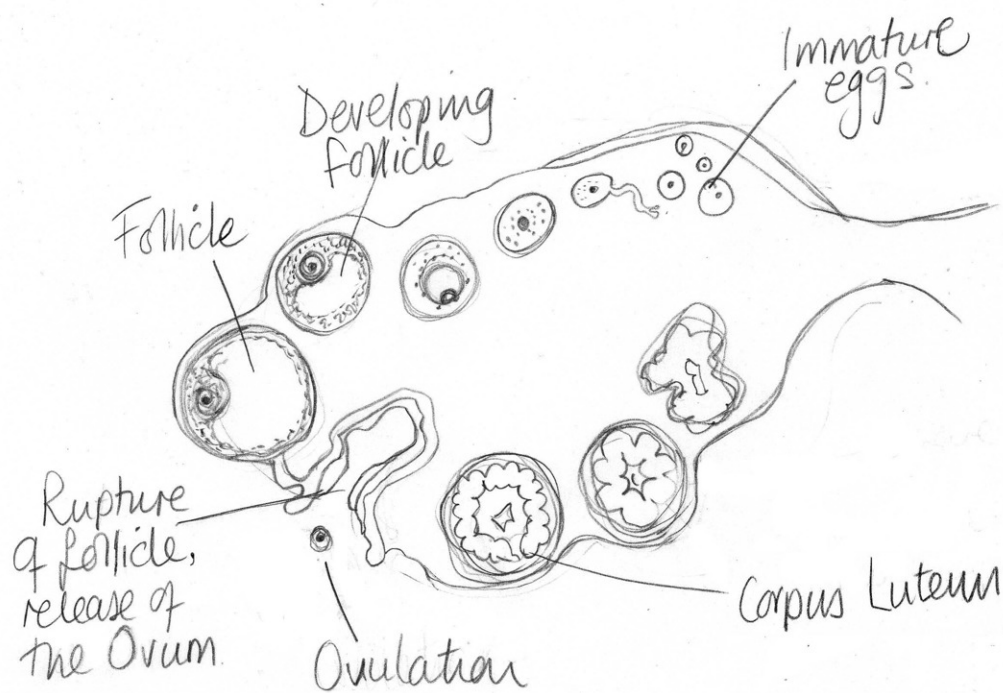




**Female reproductive organs**

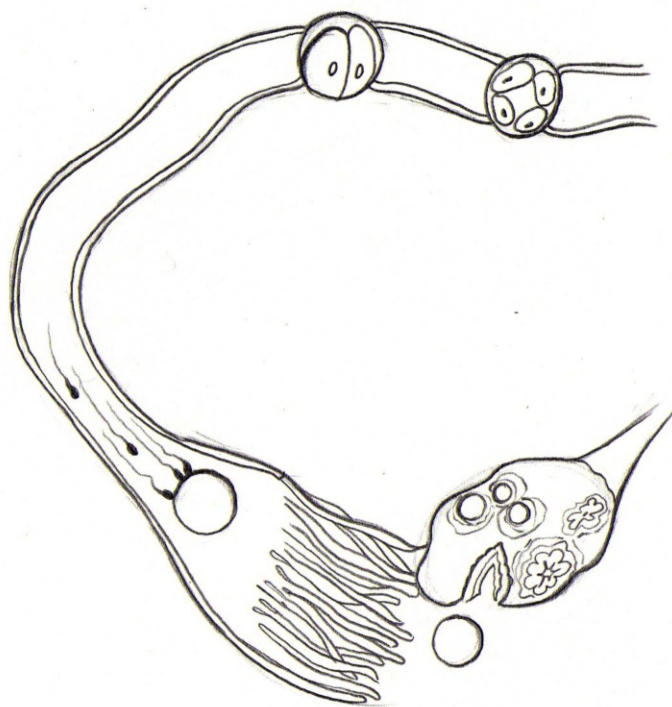


## Inside the Ovary



**Cycle of events inside the ovary**



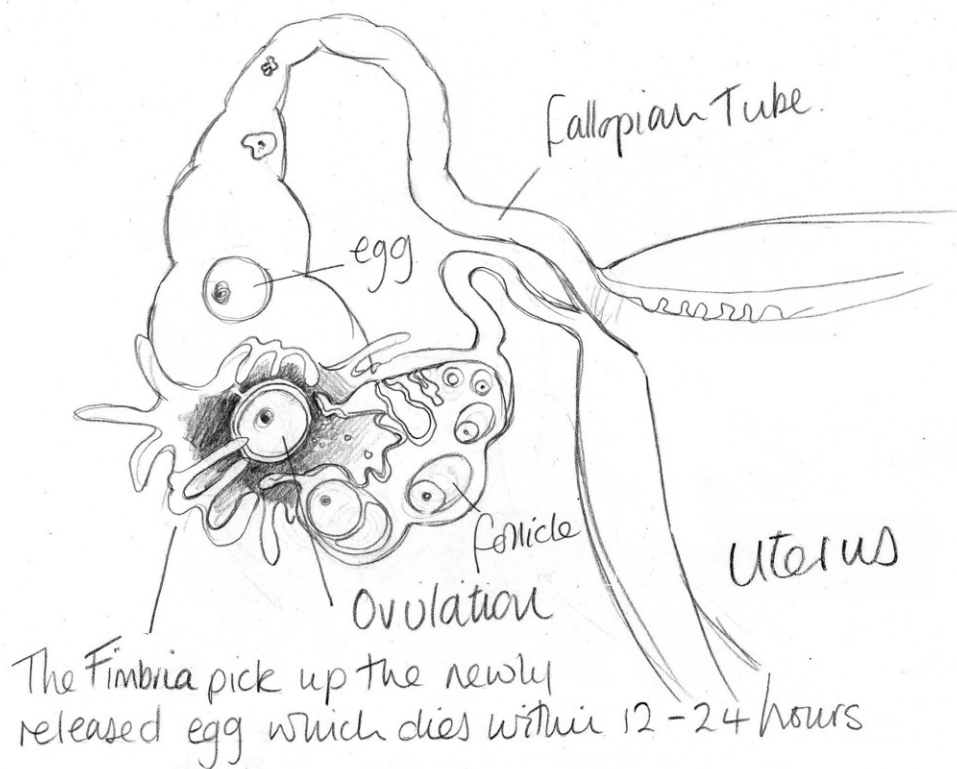


### Ovulation

The fimbria pick up the newly released egg

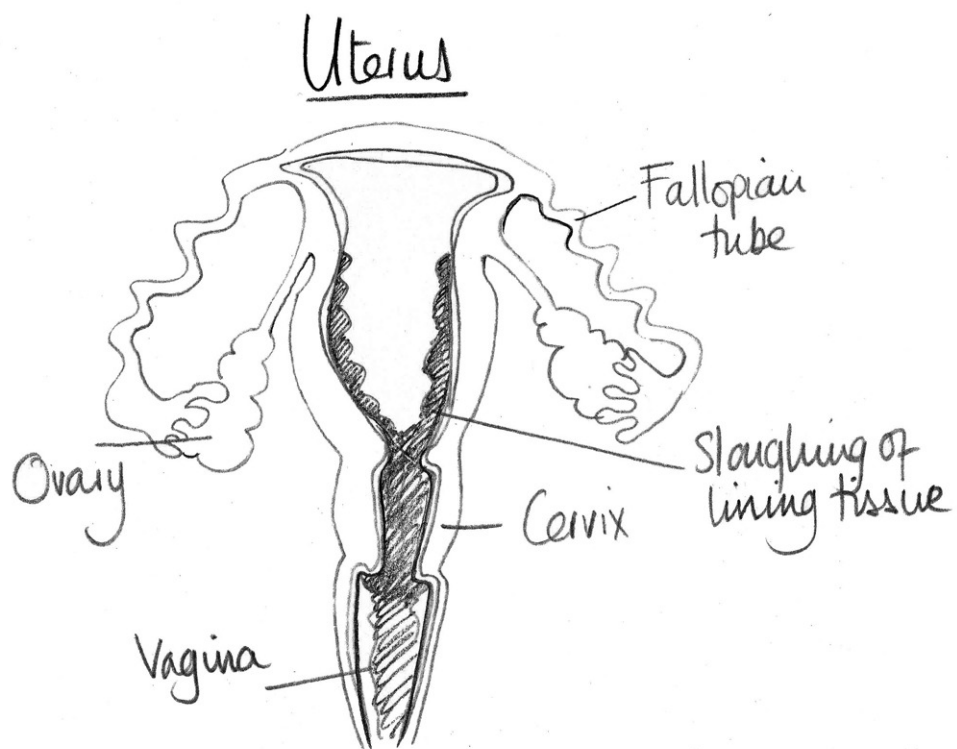






**Ovulation and death of the egg**

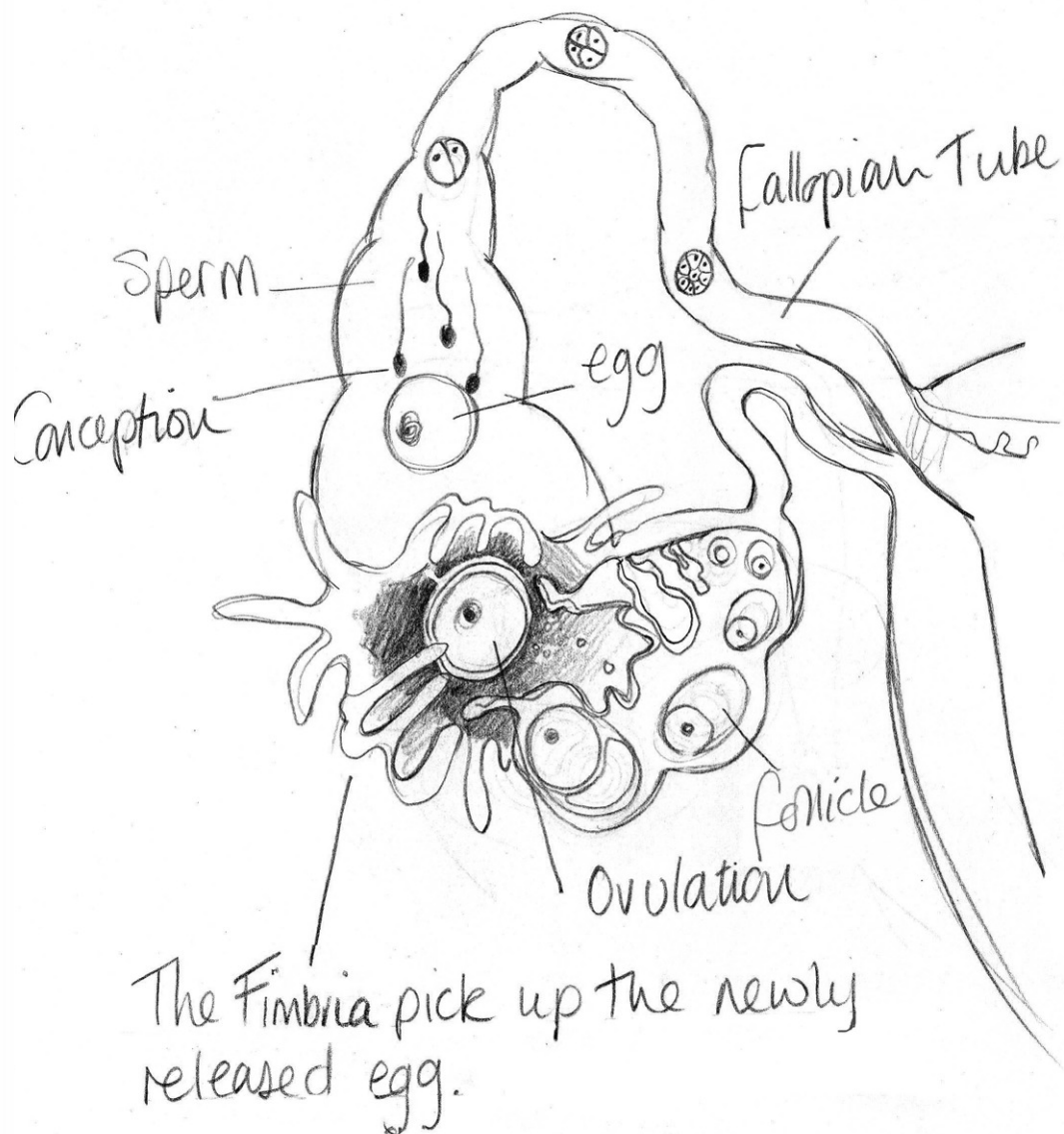




**Menstrual bleeding, or period**



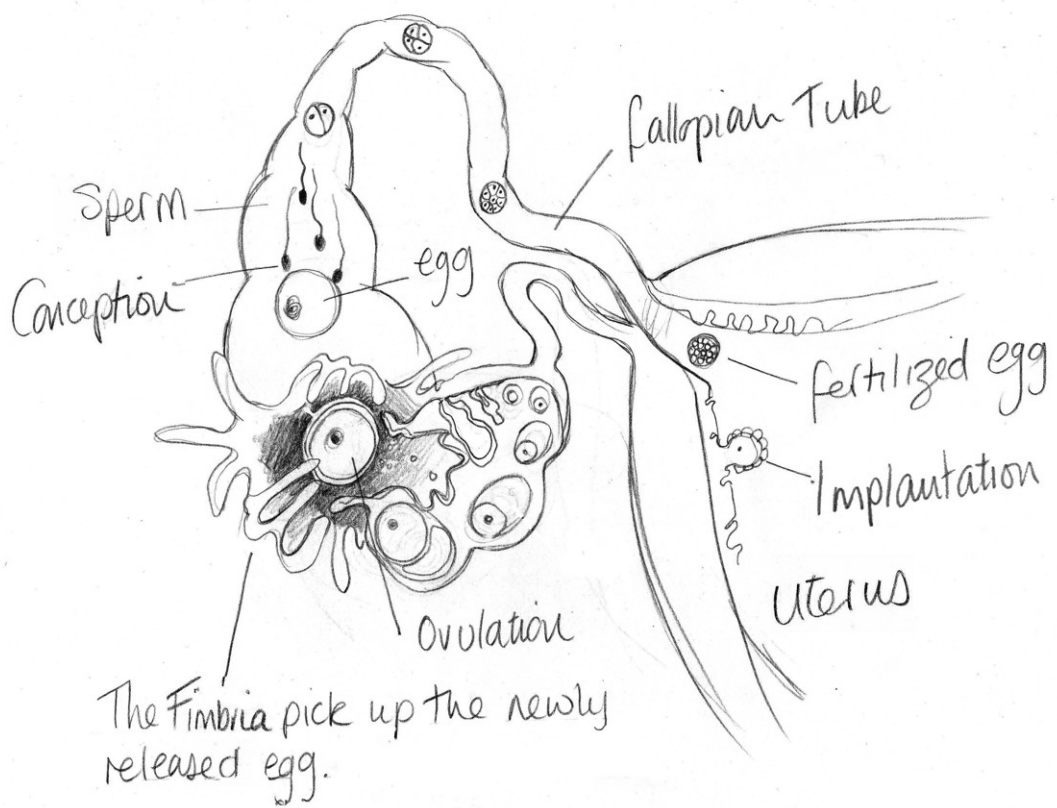




**Ovulation and conception**



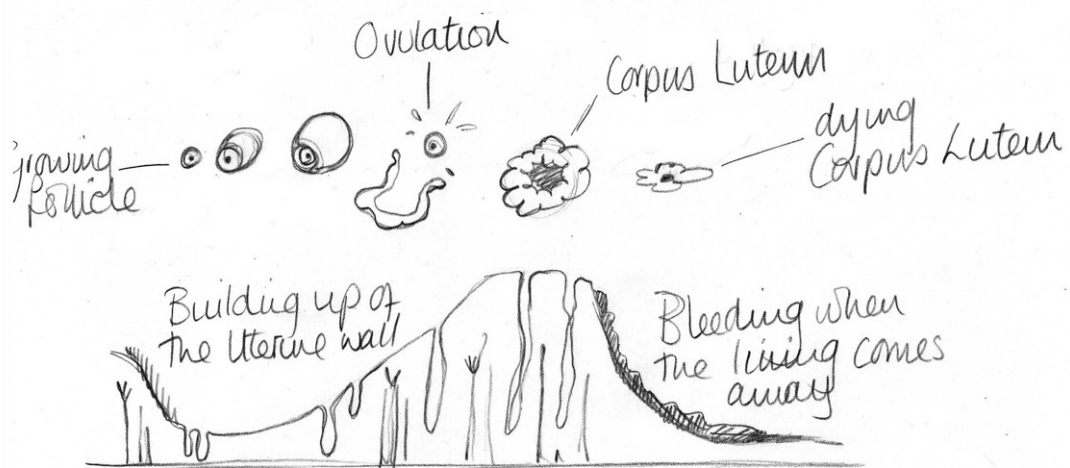




**Implantation of the embryo**



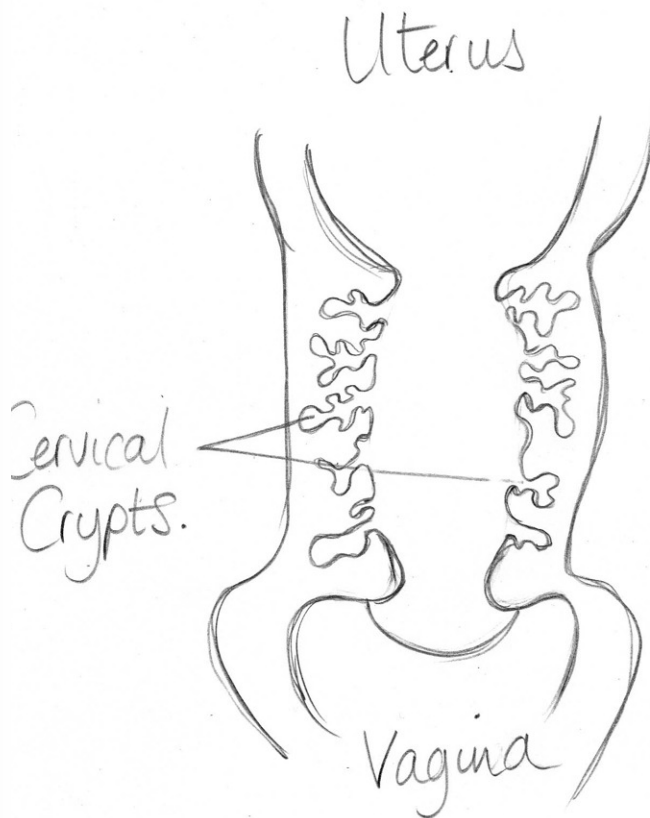




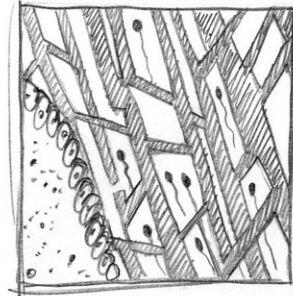
**Cycle of events in the uterus with ovulation cycle above**



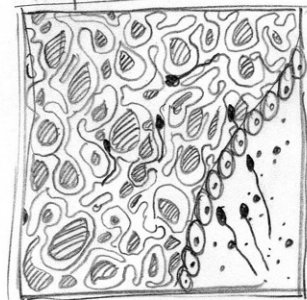




Fertile mucus.

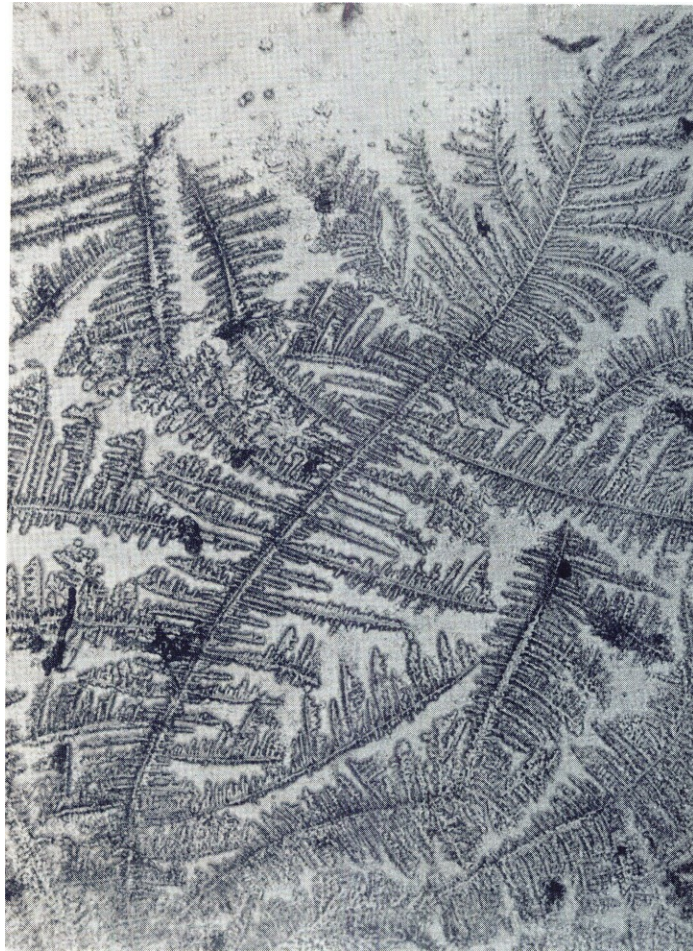


Infertile Mucus



The cervix and its mucus

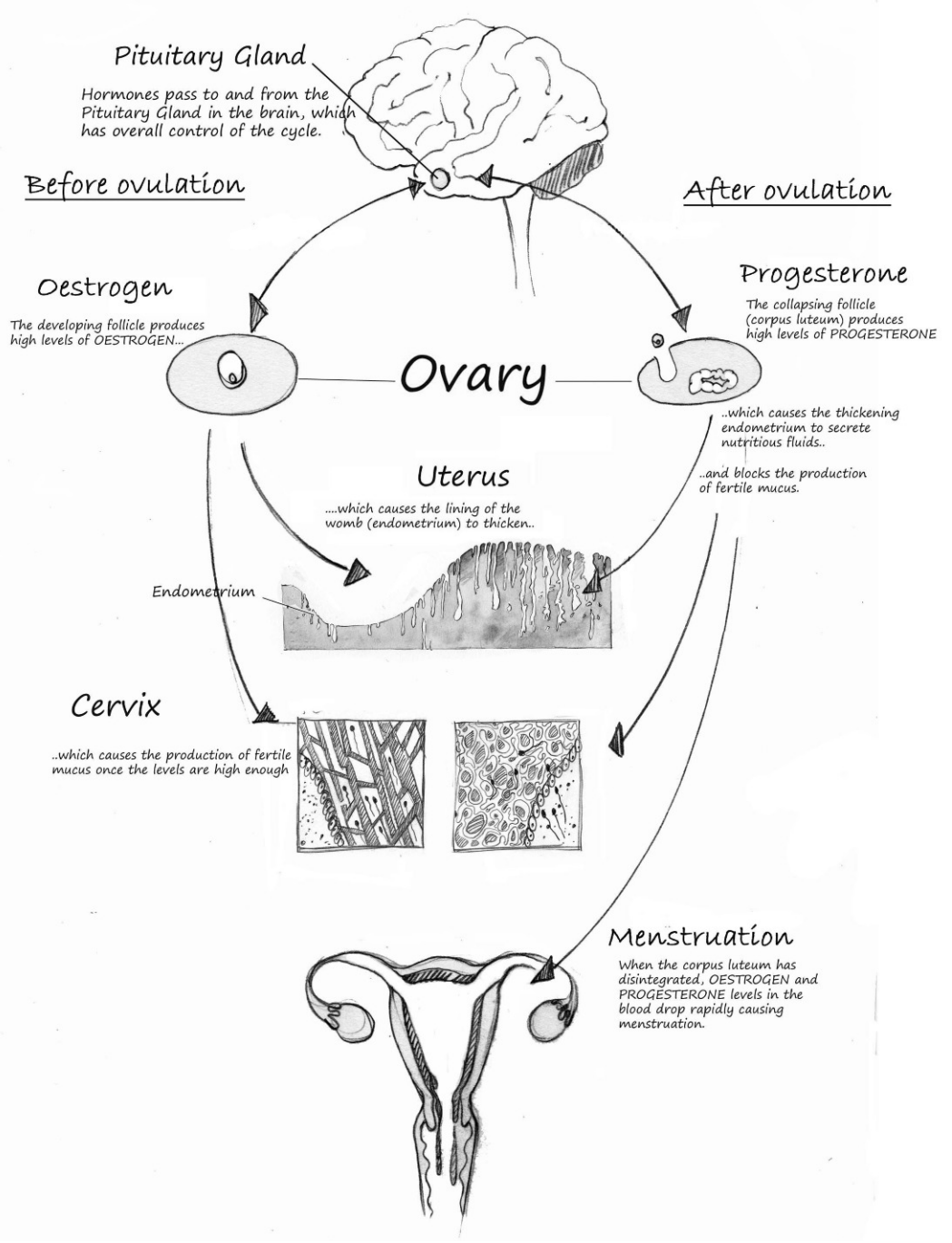




**Fertile cervical mucus under a microscope**

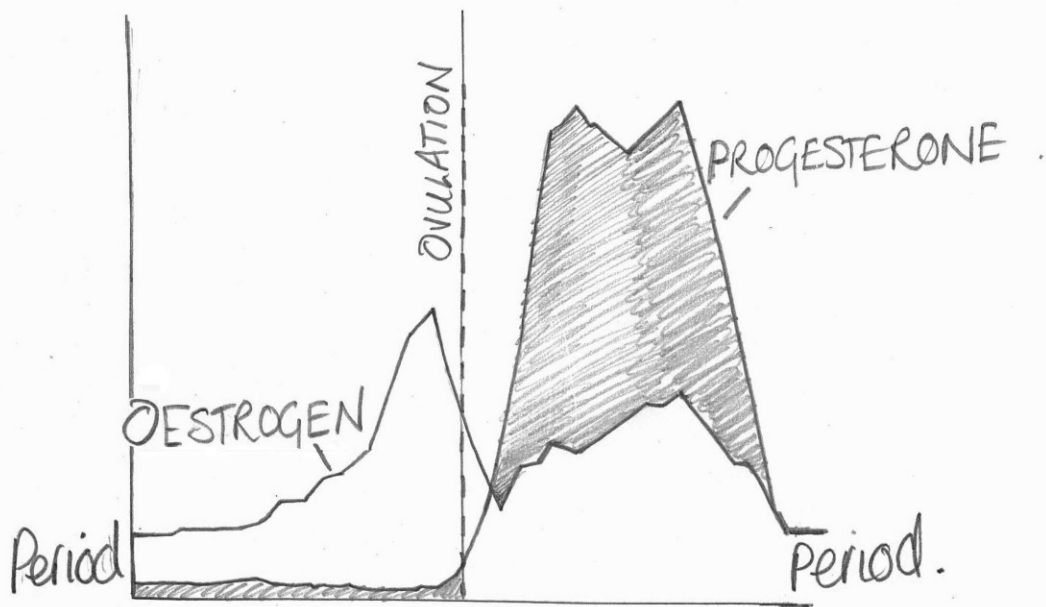






The full menstrual cycle

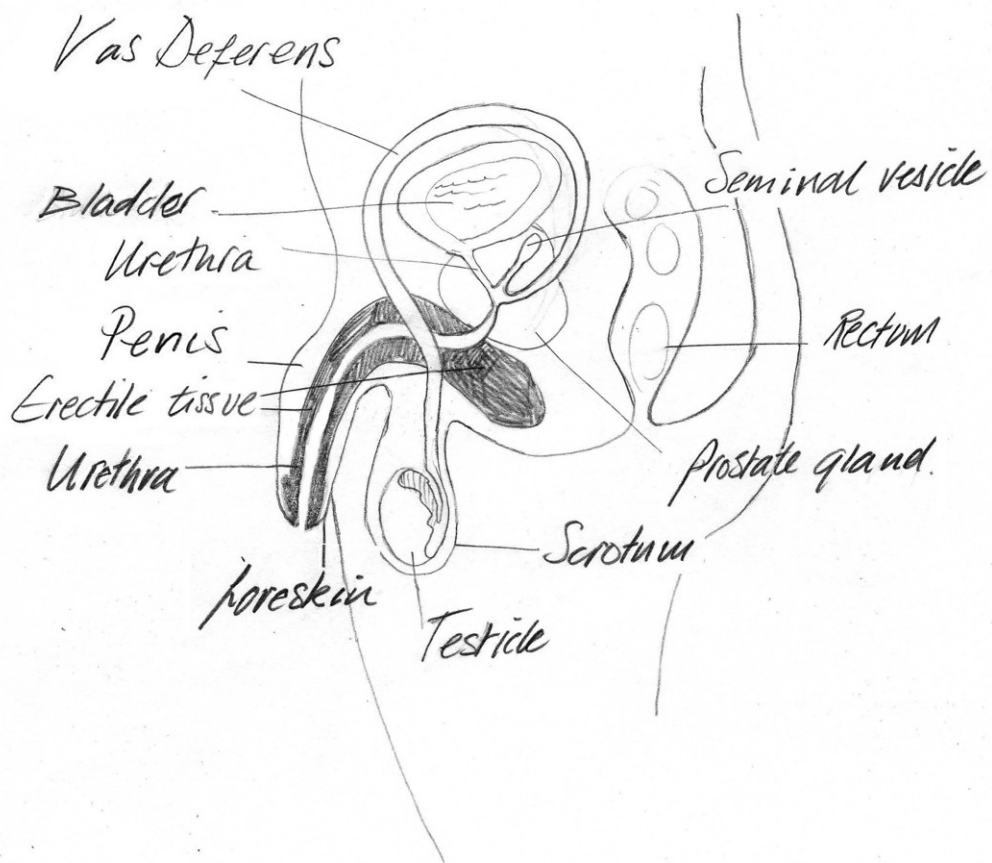




**Female hormone cycle**

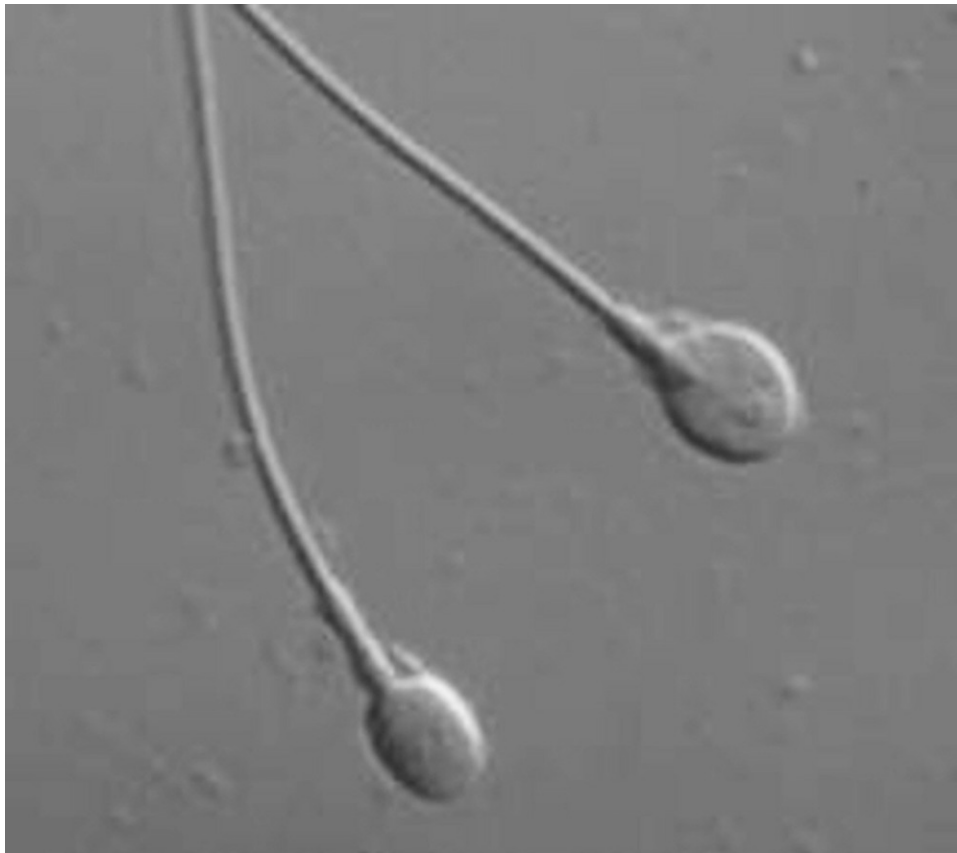






**Male reproductive organs**

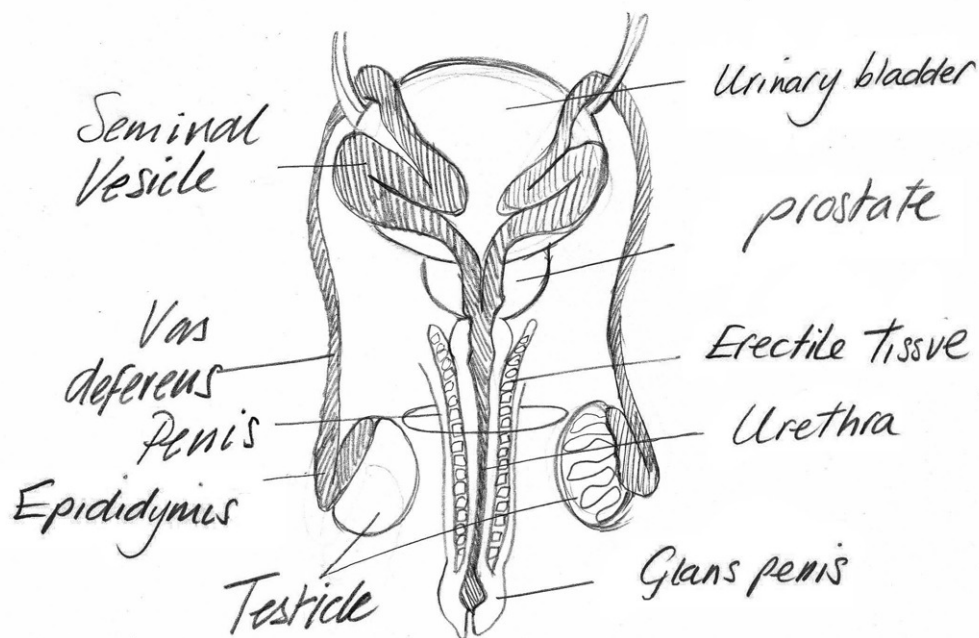




**Two sperm under a microscope, showing their heads and tails**



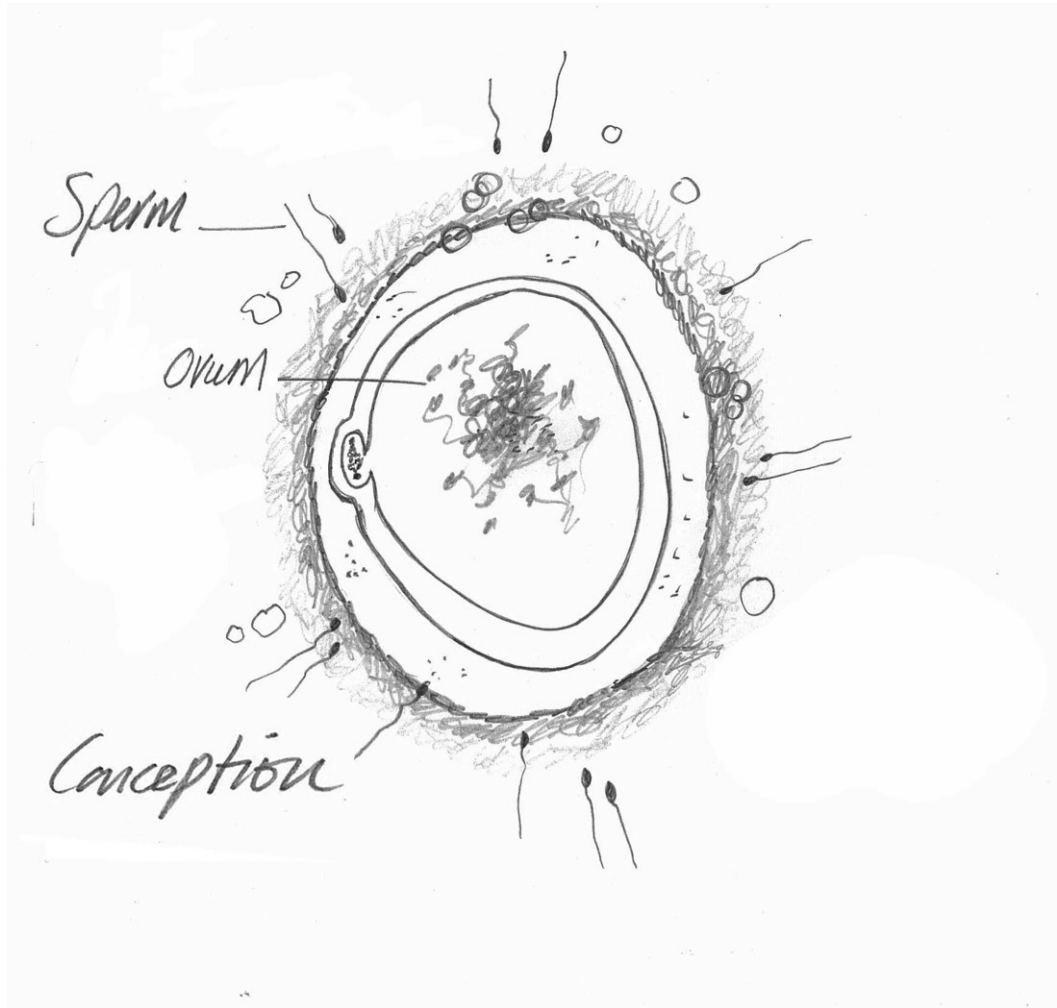




**Sperm transport system**

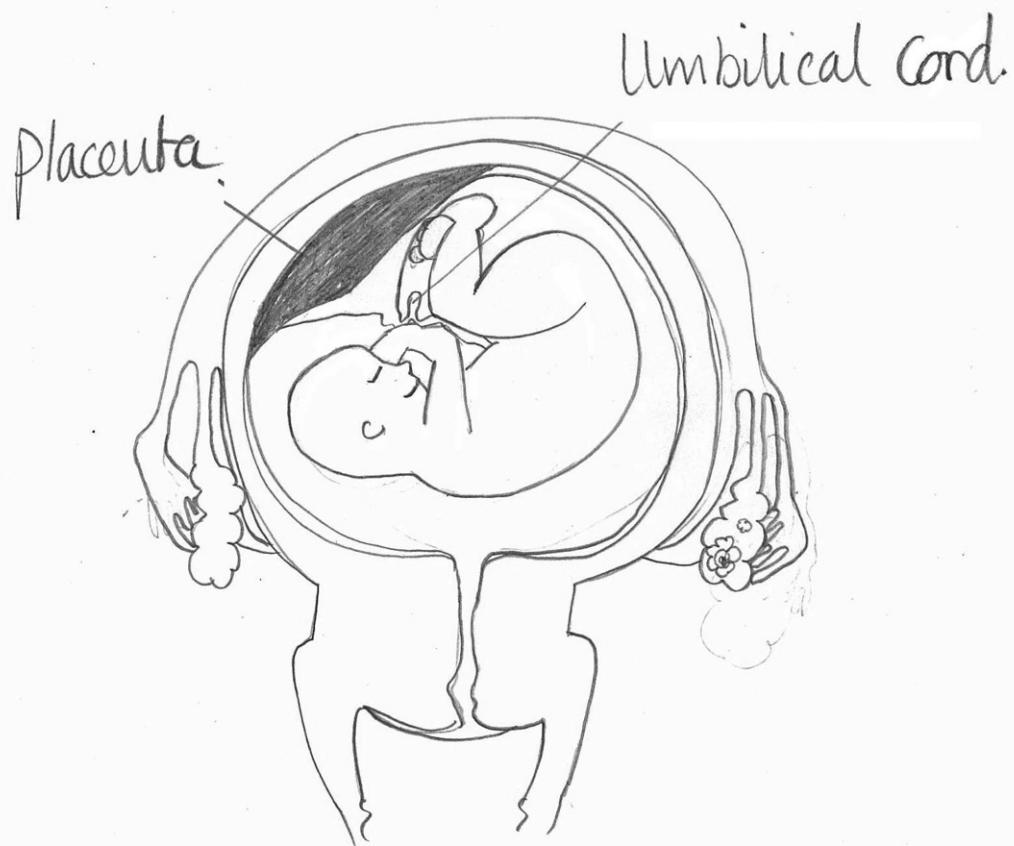






**Conception**





**Baby at 16 weeks gestation**